

Wolf Point Club Routing, USA— An Evolutionary Case Study

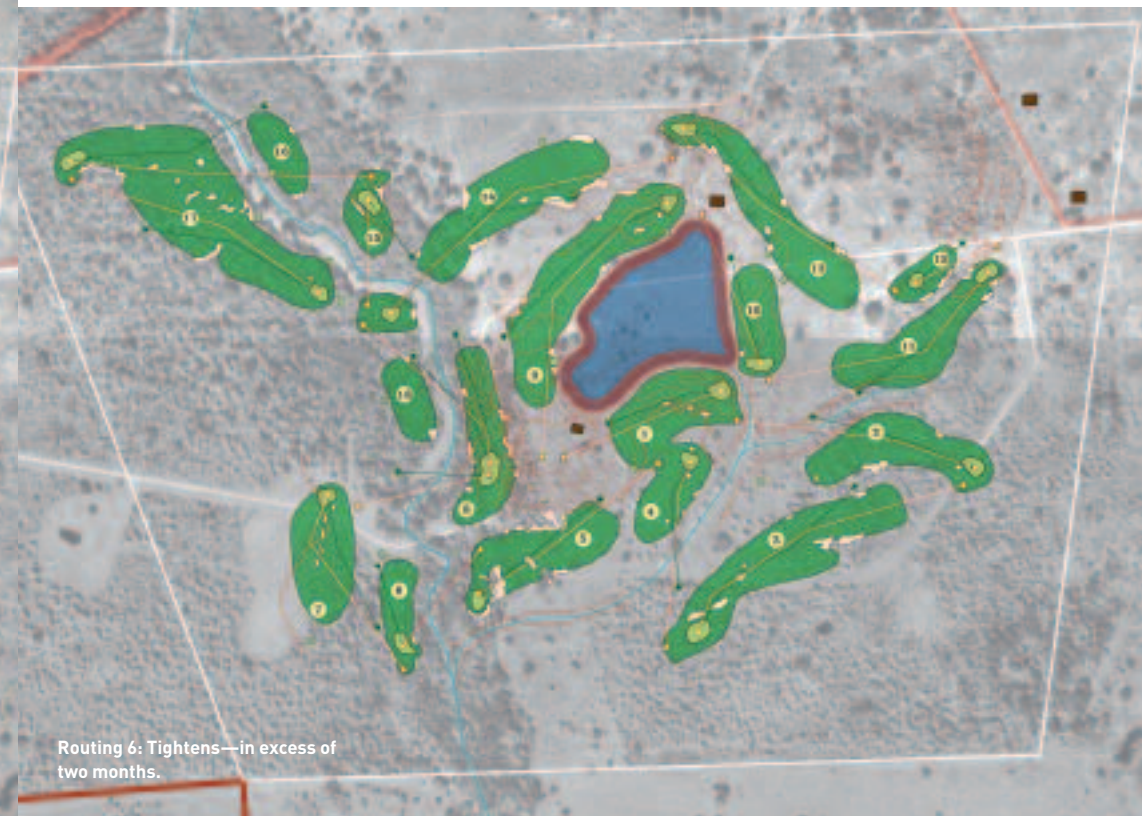
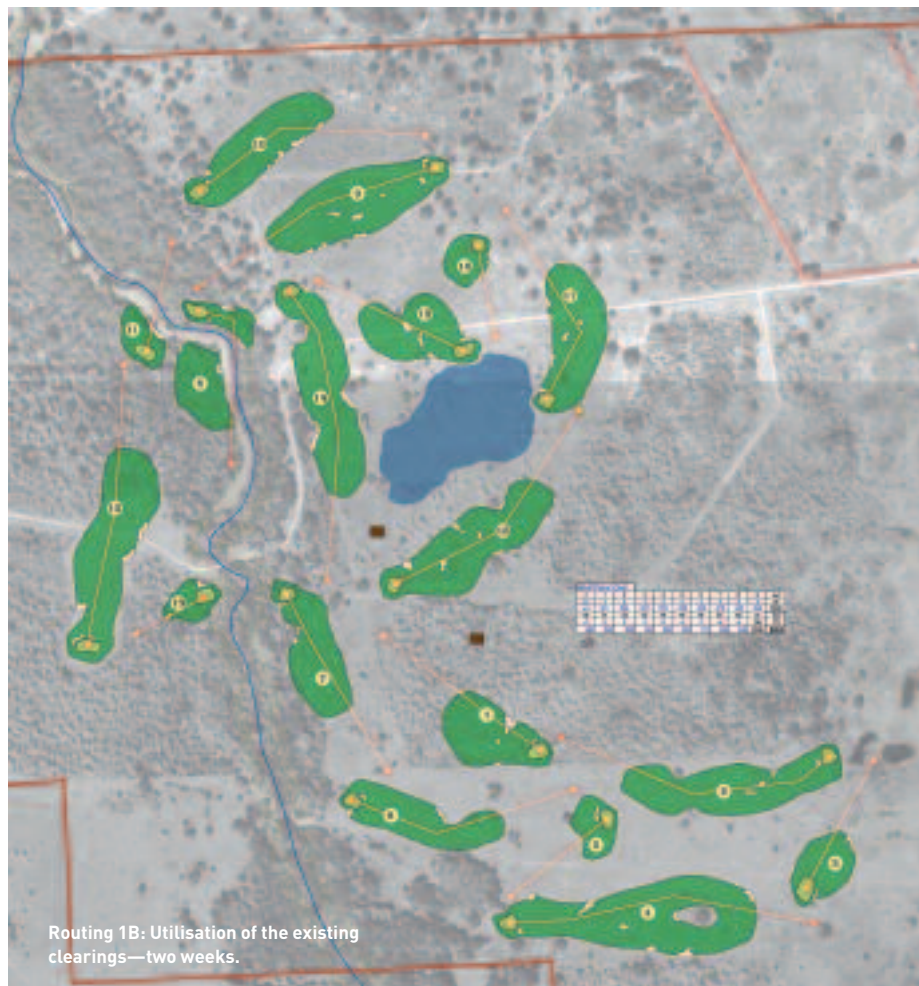
The process of routing a golf course is 'akin to running a marathon minus the map leading you to the finish line' according to Wolf Point Club course architect Mike Nuzzo. At any one of the myriad steps a wrong turn or improper decision can lead to a meagre conclusion.

At Wolf Point Club, on the Gulf Coast of Texas, the client's goals were to make the course as 'nice as possible with a minimum of labour without consideration for schedule'. The playability requirement was to present a challenging layout, yet not expose golfers to the headache of a series of lost balls in long grass. It was designed with matchplay in mind with a decided advantage to the familiar player—exactly like The Old Course, St Andrews. It also has several small loops for quick matches and different configurations.

Mike Nuzzo placed emphasis on a variety of hole-lengths, strategies, and, especially, orientations to the ubiquitous south-eastern prevailing gulf winds. The results included prodigiously wide fairways with influential ground undulations, ripples, crinkles, and furrows. The site-planning goal was to keep a consistency to the course when transitioning between the two major site regions, which were the ranch and creek.

Fortunately, a detailed chronicle of the routing process throughout design and construction was maintained. The design was created, modified and archived digitally—one hundred per cent, which was then transferred to a GPS unit that was used on site almost every day. Any site changes were mapped and imported back into the design, so data kept flowing both ways throughout the entire project. Design and construction are intertwined and often inseparable. The following images are some of the routing snapshots in time of Wolf Point Club.

As a final routing remark, Nuzzo left out a practice facility, as it was considered that the finest place to practice is on the course itself.



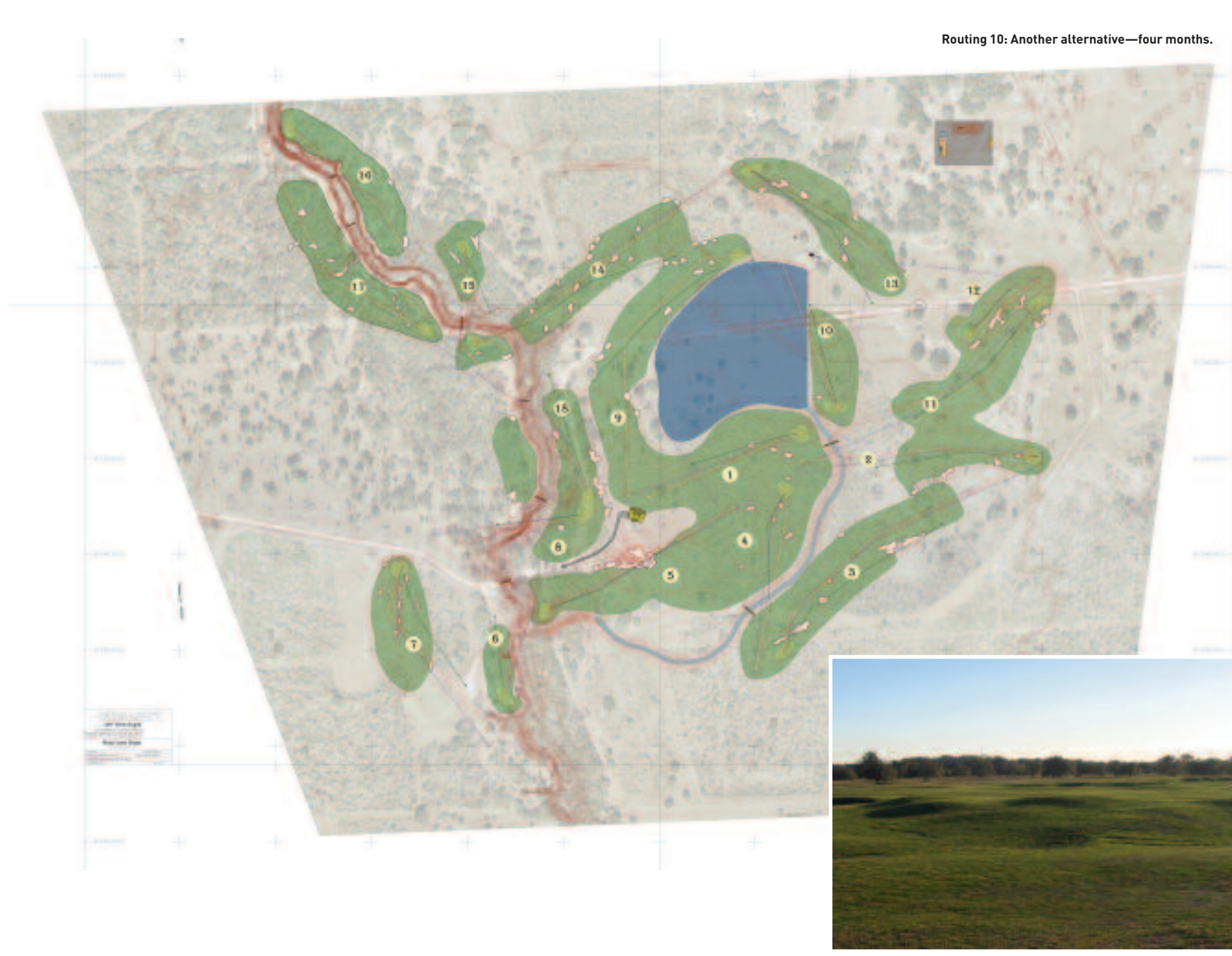
Routing 9: Construction plans—three months.



Routing 9B: Alternative idea—three months.

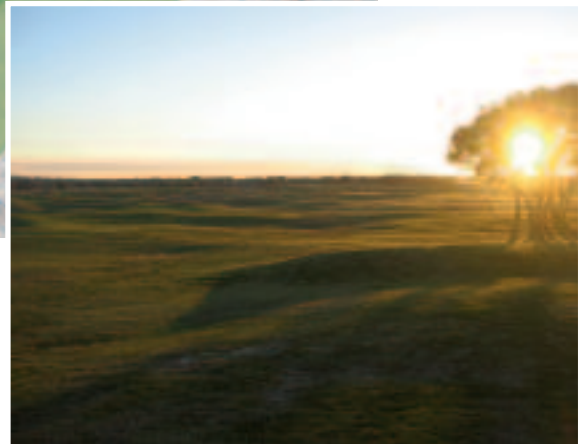


Routing 10: Another alternative—four months.





Routing 9 plus 10: Final commitment—nine months.



Final Routing and GPS 'As-Built', laid-over current aerial photograph—fourteen months.